

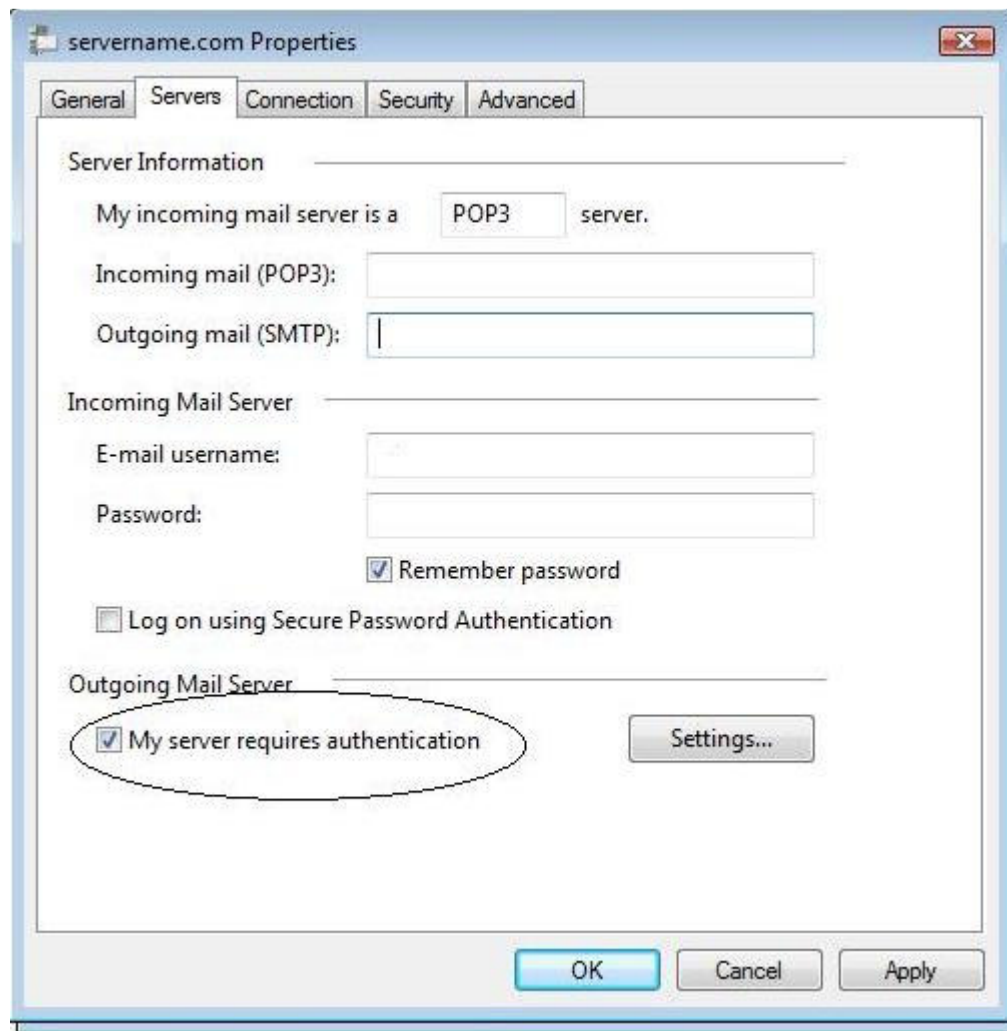
# How to turn on SMTP Authentication

---

Windows Computers:

## Windows Mail (Windows Vista)

- Click the **Tools** menu.
- Click **Accounts**.
- Select your email account, and then click **Properties**.
- Click the **Servers** tab.
- Put a check next to “**My server requires authentication**” (See below).



---

## **Outlook Express (Windows 95/98/ME/2000/XP) & Outlook 2000:**

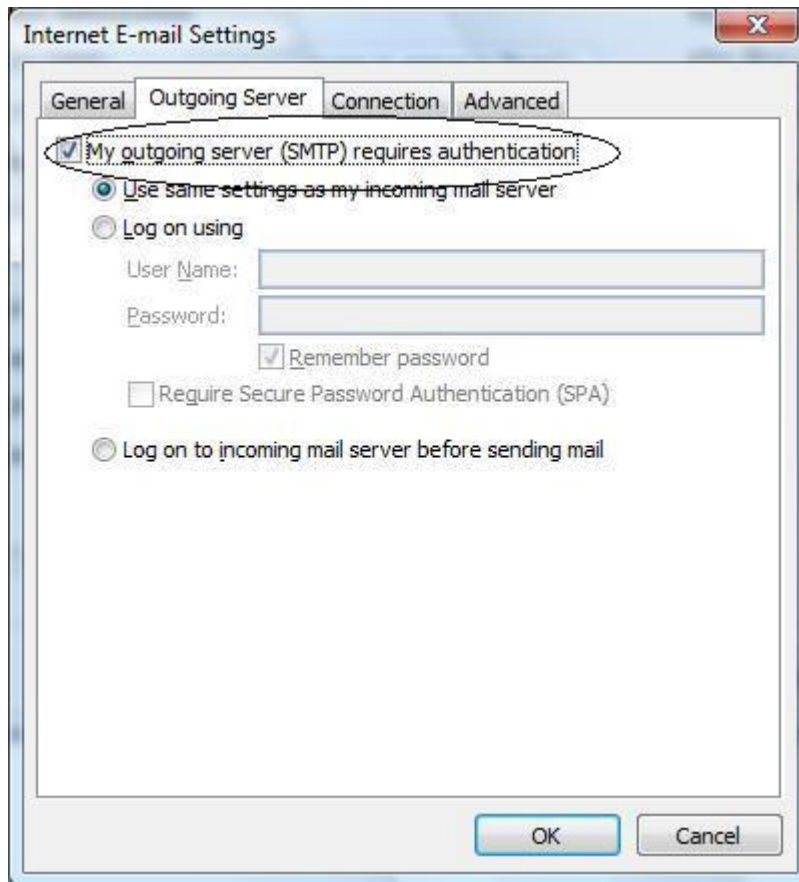
- Click the **Tools** Menu.
- Click **Accounts**.
- Select your email account, and then click **Properties**.
- Click the **Servers** tab.
- Put a check next to “**My outgoing server requires authentication**” (See below).



---

## **Outlook 2007**

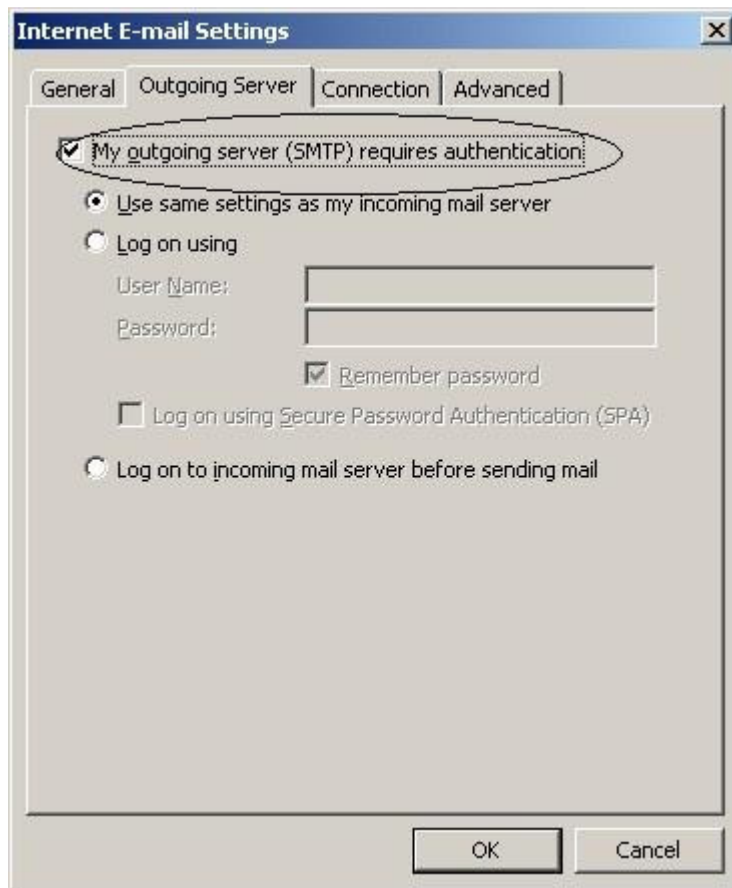
- Click the Tools menu.
- Click Account Settings.
- Select your email account, and then click Change.
- Click the More Settings button.
- Click the Outgoing Server tab.
- Put a check next to “My outgoing server (SMTP) requires authentication” (See below).



---

## **Outlook XP/2003**

- Click the **Tools** menu.
- Click **Email Accounts**.
- Click “**View or change existing e-mail accounts**”, then click next.
- Select your email account, and then click **Change**.
- Click the **More Settings** button.
- Click the **Outgoing Server** tab
- Put a check next to “**My outgoing server (SMTP) requires authentication**”.



---

## **Mozilla Thunderbird**

- Click the **Tools** menu.
- Click **Account Settings**.
- Click on **Outgoing Server (SMTP)**.
- Select your email account, and then click **Edit**.
- Put a check next to **“Use name and password”** (see below)

